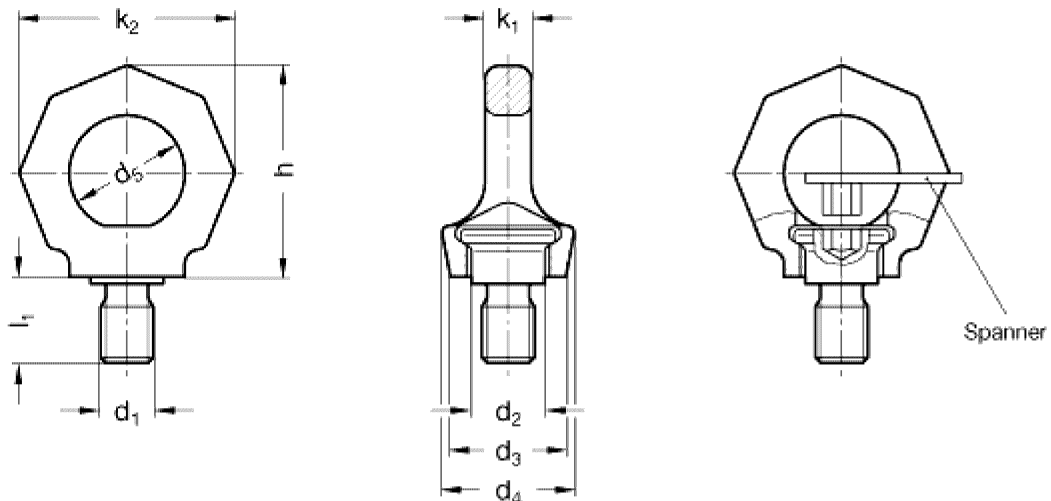


## GN 581 Lifting eye bolts (rotating)



Type **A** without spanner

Type **B** with spanner

d1	d2	d3	d4	d5	d6 max.	h	k1	k2	l1	Nominal Load
<b>M 10</b>	14	25	28	25	10	45	8,5	47	15	0,4 t ( 4000 N)
<b>M 12</b>	18	30	34	30	12	55	10	56	18	0,75 t ( 7500 N)
<b>M 16</b>	22	35	40	35	16	64	14	65	24	1,5 t (15000 N)
<b>M 20</b>	27,5	40	50	40	20	74	16	75	30	2,3 t (23000 N)
<b>M 24</b>	33	48	60	48	24	90	19	90	36	3,2 t (32000 N)
<b>M 30</b>	41,5	60	75	60	30	112	24	112	45	4,5 t (45000 N)
<b>M 36</b>	49,5	75	90	72	36	135	29	135	54	7,0 t (70000 N)

### Specification

Ring  
Steel  
German Material  
No. 1.6541

forged  
high-tensile tempered  
100% electro magnetic  
tensile test to DIN 5691  
(EN1677)

Plastic coated, pink

Bolt  
Steel  
Tensile strength 1000  
N/mm<sup>2</sup>

### Information

Lifting eye bolts (rotating) GN 581 offer a high load carrying capacity and they are tested to meet safety standards (safety factor 4). In view of the very high accident risks and possible material damage which could emanate from unsatisfactory suspension, the safety factor cannot be set high enough. The nominal values of the load capacity given in the table are for the most disadvantageous loading conditions.

Unlike lifting eye bolts DIN 580 the ring is mounted in a bearing and can be rotated. The ring can be positioned in the direction of the load to make use of its optimum strength. The higher load bearing capacity as compared with the lifting eye bolts DIN 580 permits the use of smaller mounting bolts.

The special cap screw cannot be removed from the ring.

### How to order

Lifting eye bolt (rotating)

#### GN 581-M12-A

Code no. **581**  
d1 **M12**  
Type **A**